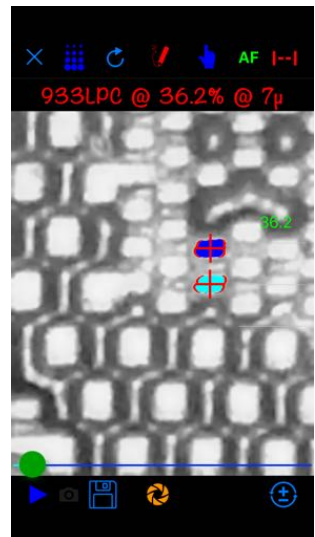
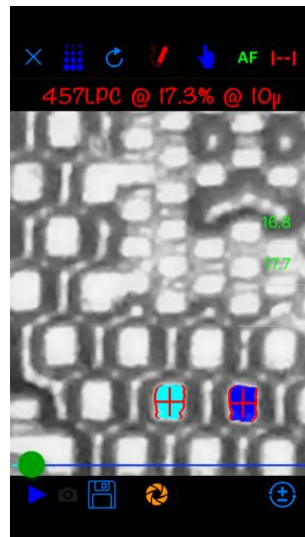
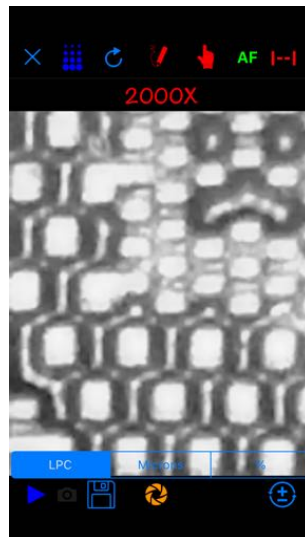
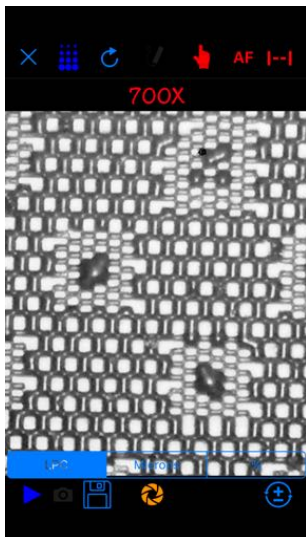


PackDot NANO - NEW FEATURES

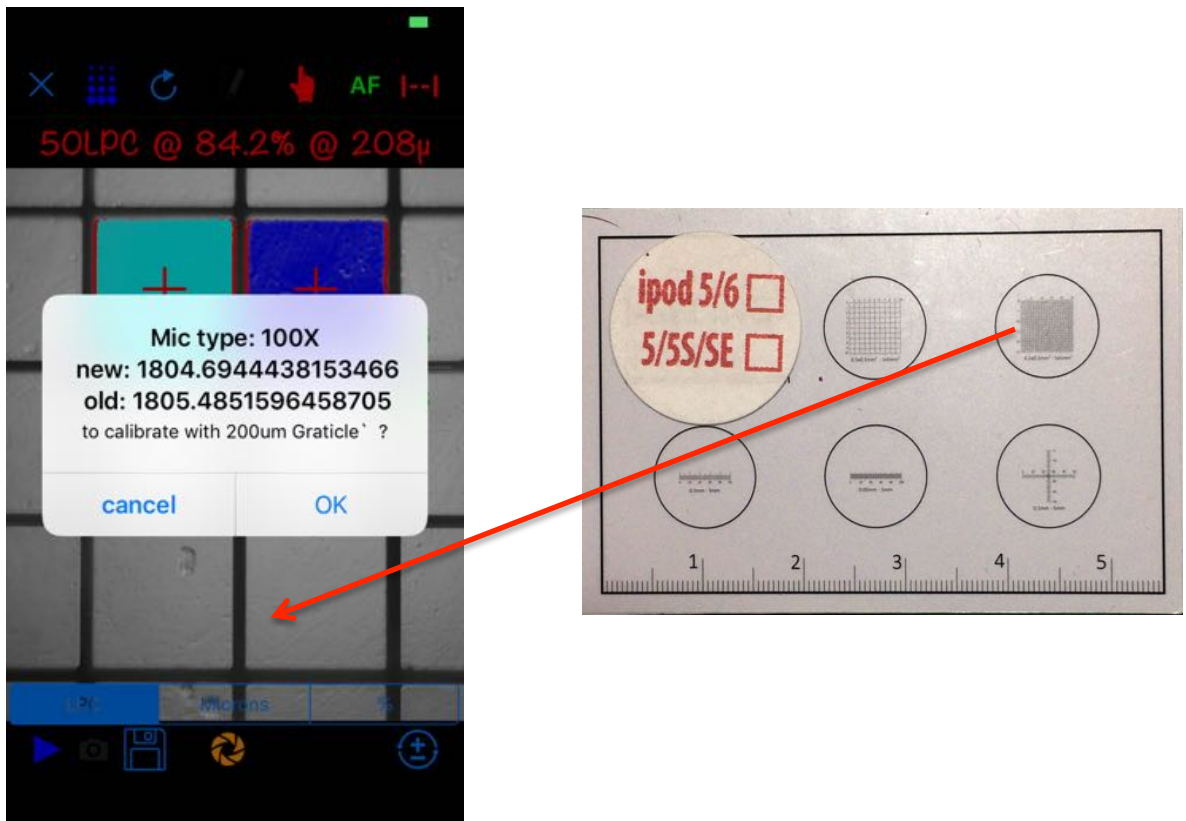
Incredibly portable: literally fits a finger



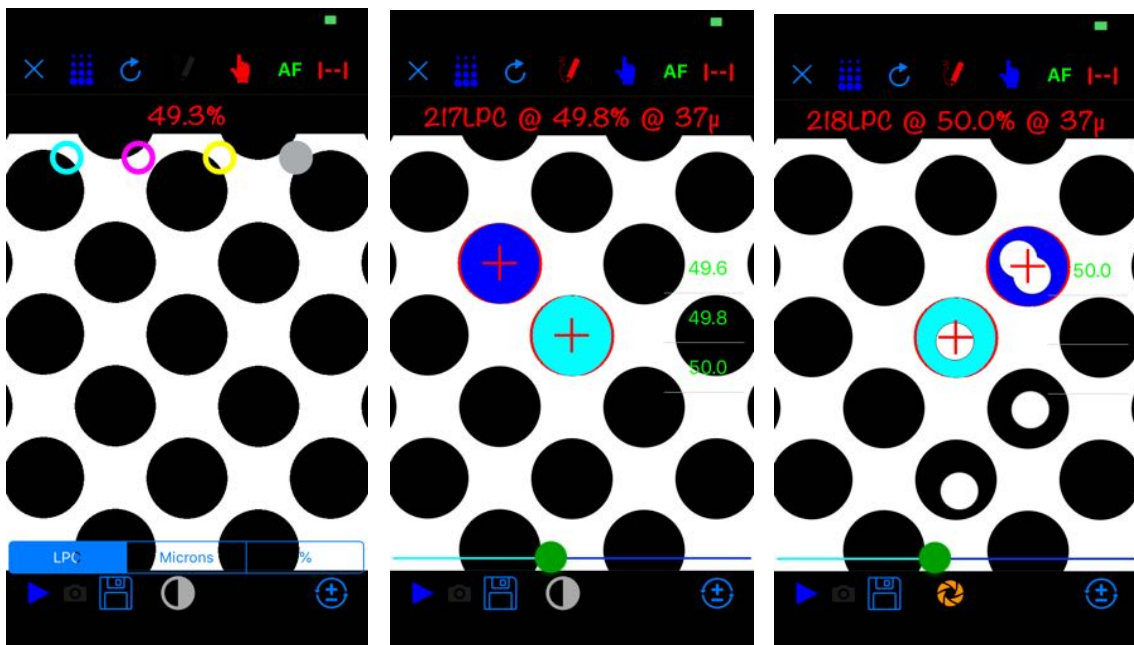
This small but powerful lens, when attached to an IOS, turns into a powerful microscope, with magnification and quality, comparable to many high-cost microscopes.



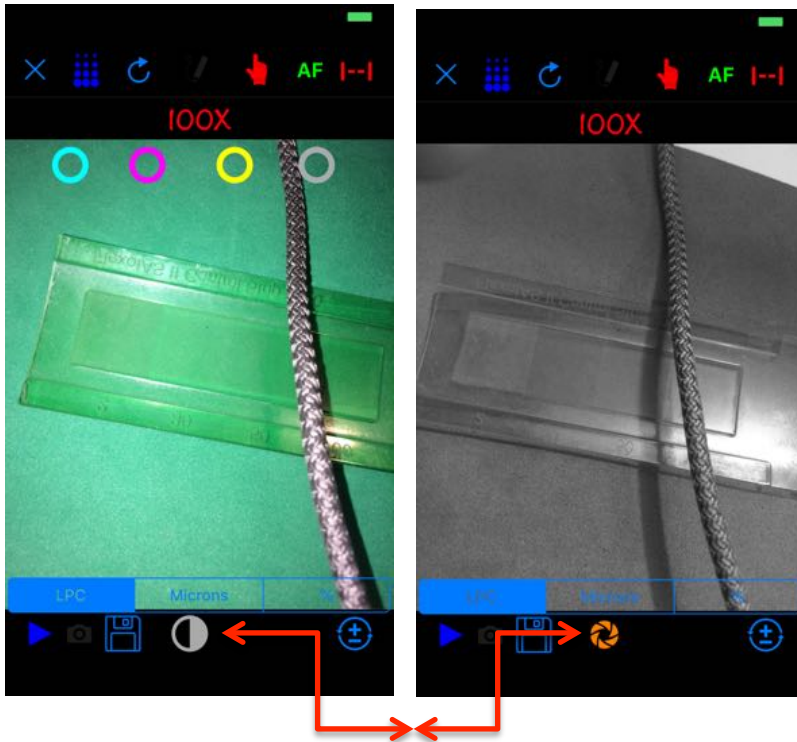
New Calibration: PackDot NANO is self calibrating with a simple graticule scanner.



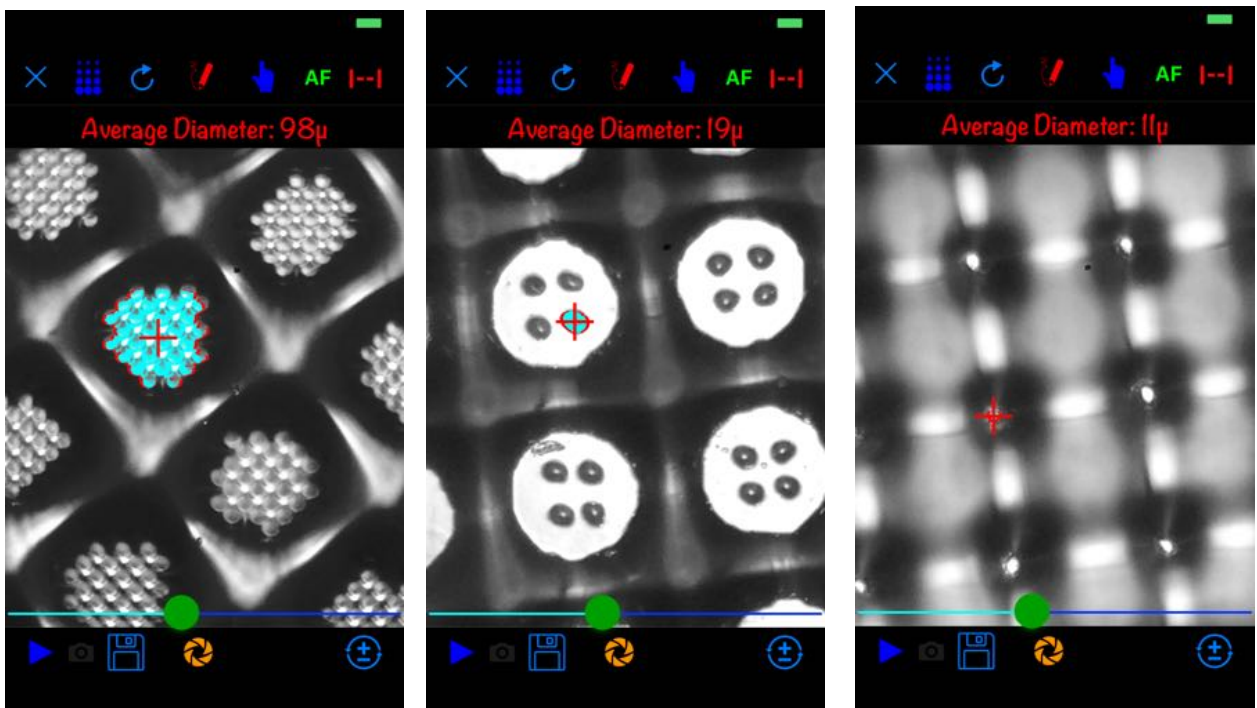
Percentage Tool: calibrated to use the outer diameter of the dots. You can scan the total frame or evaluate by means of pairs of dots.



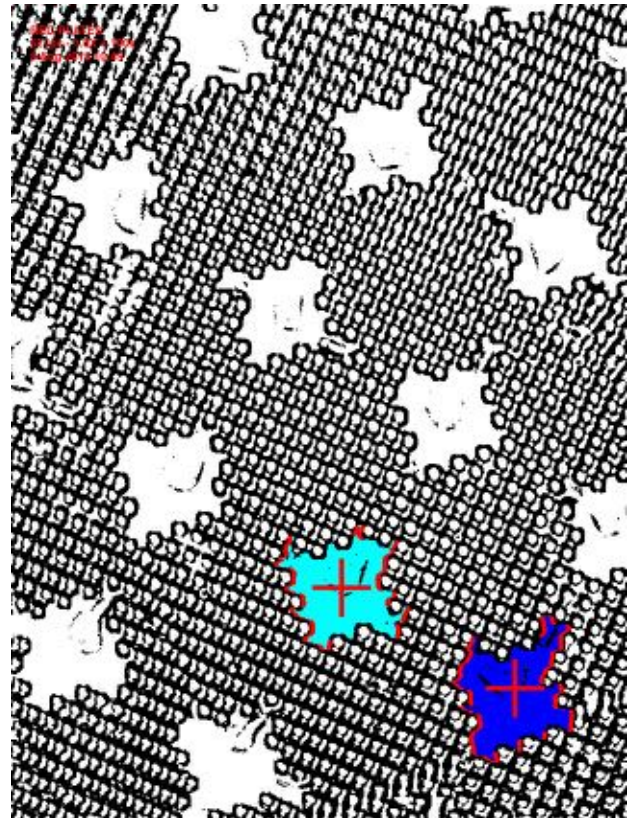
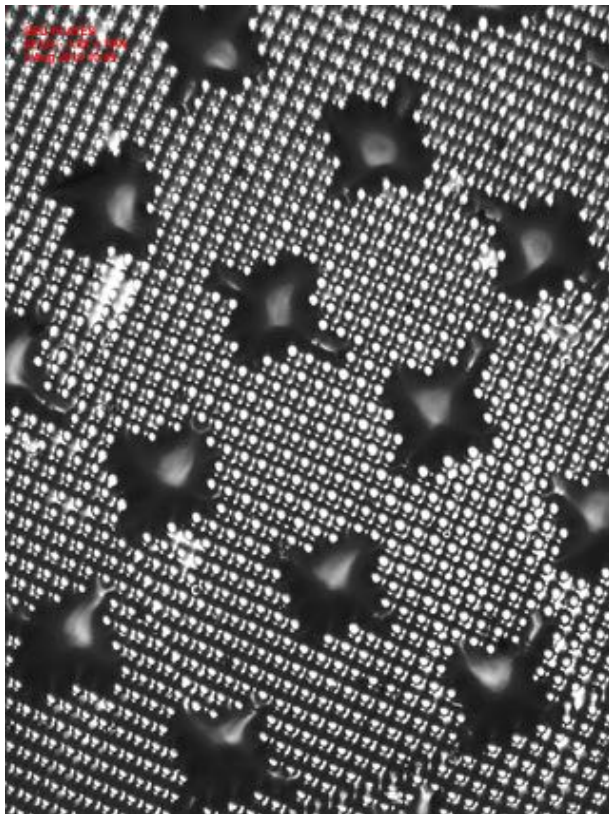
Fast Change: B&W <-> Color Filter setup for press (torch on/color) or plate (torch off / B&W)



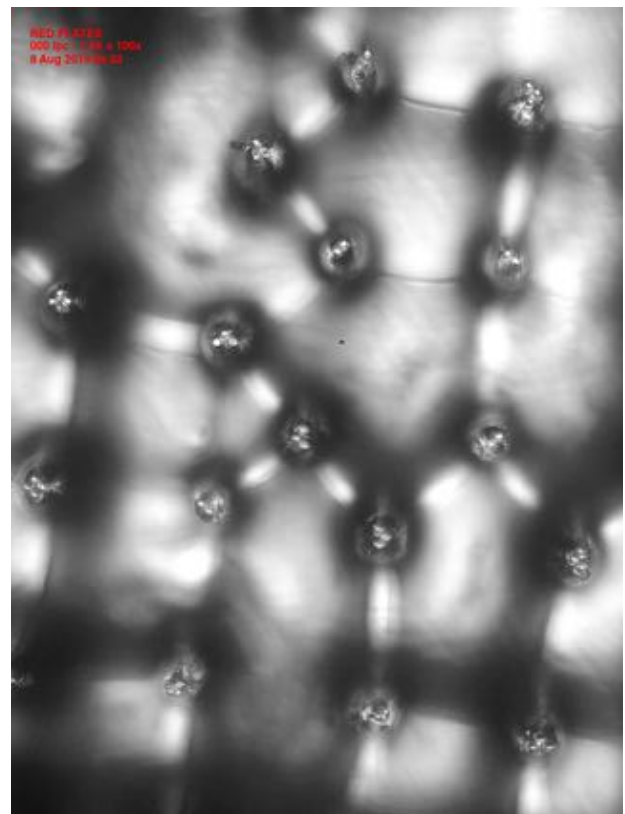
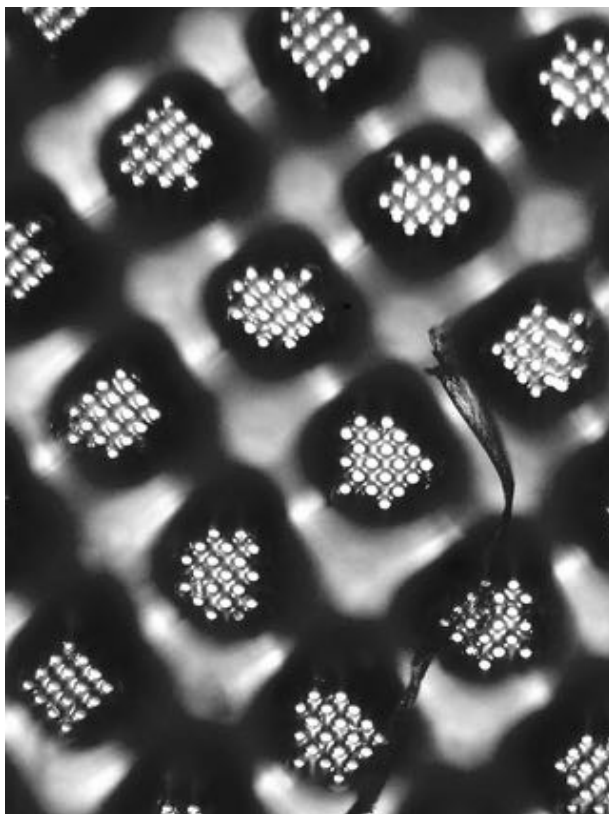
Are 5 different ways to measure dots, is possible to get the percentage with just one point.
The diameter is instantaneous.



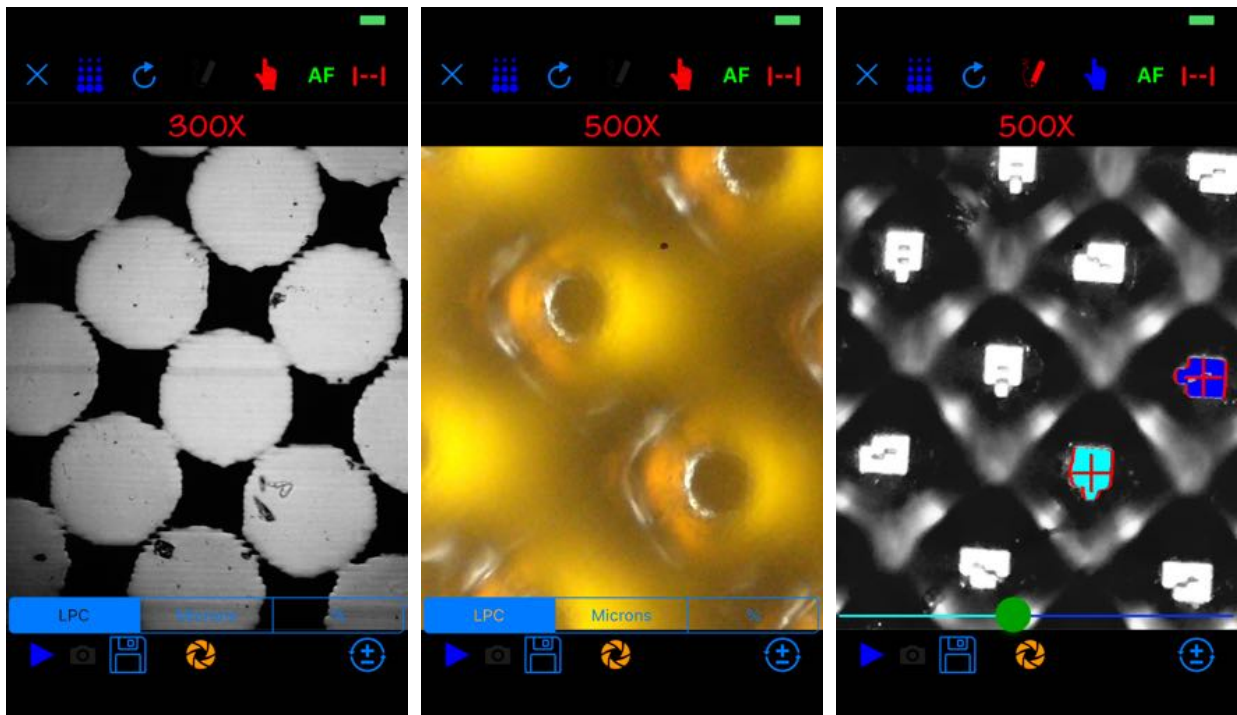
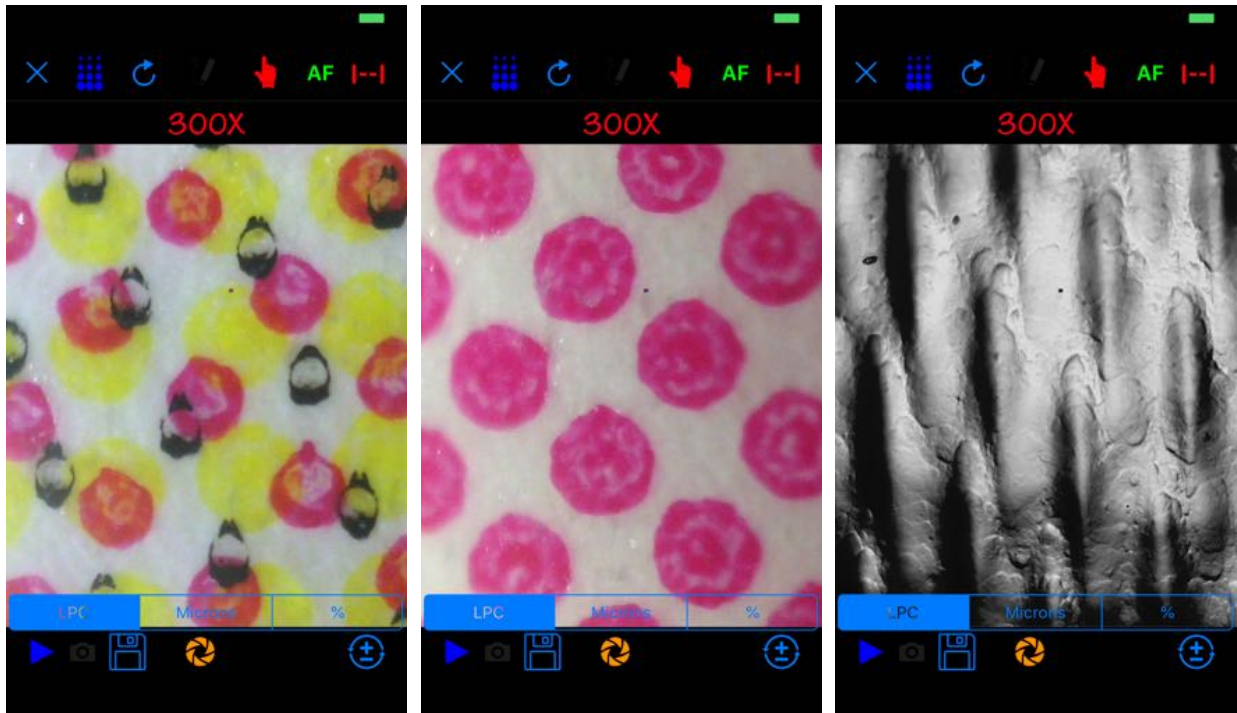
Draw Tool: Provides close analysis of actual contour created by textured dots without border contour



Led Box: Highlights every detail of textures or common points.



Color analysis or just documenting a wrong process now you can see everything!!



watch our playlist (activate CC) <https://bit.ly/2IA7eze>



https://www.youtube.com/playlist?list=PL9QMnlw_D1PVtIDxV0ErGCtfwsnyU2XES